



Electronic Health Records and Behavioral Health

Virna Little PsyD, LCSW-r, MBA, SAP , CCM

Behavioral Health and EMR

- EMR implementation in 2002
- All behavioral health and community programs on EMR since implementation



EMR and Workforce

- Has changed our workforce
- Some “don’t make it” at training
- Suicide on problem list
- Sharing diagnosis and then list on patient portal
- Collaborative documentation



Support for Clinicians

- Over 60 tools built in to EMR
- Decision supports- treatment plans
- Alerts- red and blue banners
- Flags
- Dashboards



It Takes a Village.....

- Community or physician portal
- Ability to improve intake and expedite referral services
- Ability to get information on patients
- In an emergency
- Longitudinal care planning
- Continuity
- Real time provider communication
- Agencies no longer keeping health records



DIRECT SCHEDULING

Zztest, Zoe

Age: 59 year old DOB: 2/14/1952 Allergies: Penicillins INS: SLIDING FEE MyChart: Inactive
 Sex: F MRN: 1078018 PCP: ZZTEST, MD Alert: HM Overdue or Due Soon

Clinical Review

- SnapShot
- Chart Review
- Results Review
- Flowsheets
- Allergies
- Problem List
- Medications
- Histories
- Growth Charts
- Upload Document

Patient Profile

Demographics

Referrals

- Referral by Member
- Referral by Provider

Scheduling

- Quick Appt**
- Upcoming
- Appointments

Logged in as:
 LINK, DANREF

Make Appointment

View More Times

Select the appointment's start time from below to schedule the appointment.

Search Results - ACCESS FOLLOW-UP for Zztest,Zoe

Mon 12/26/2011 - WEISS, PHILIP in KINGSTON-FM - (30 min)

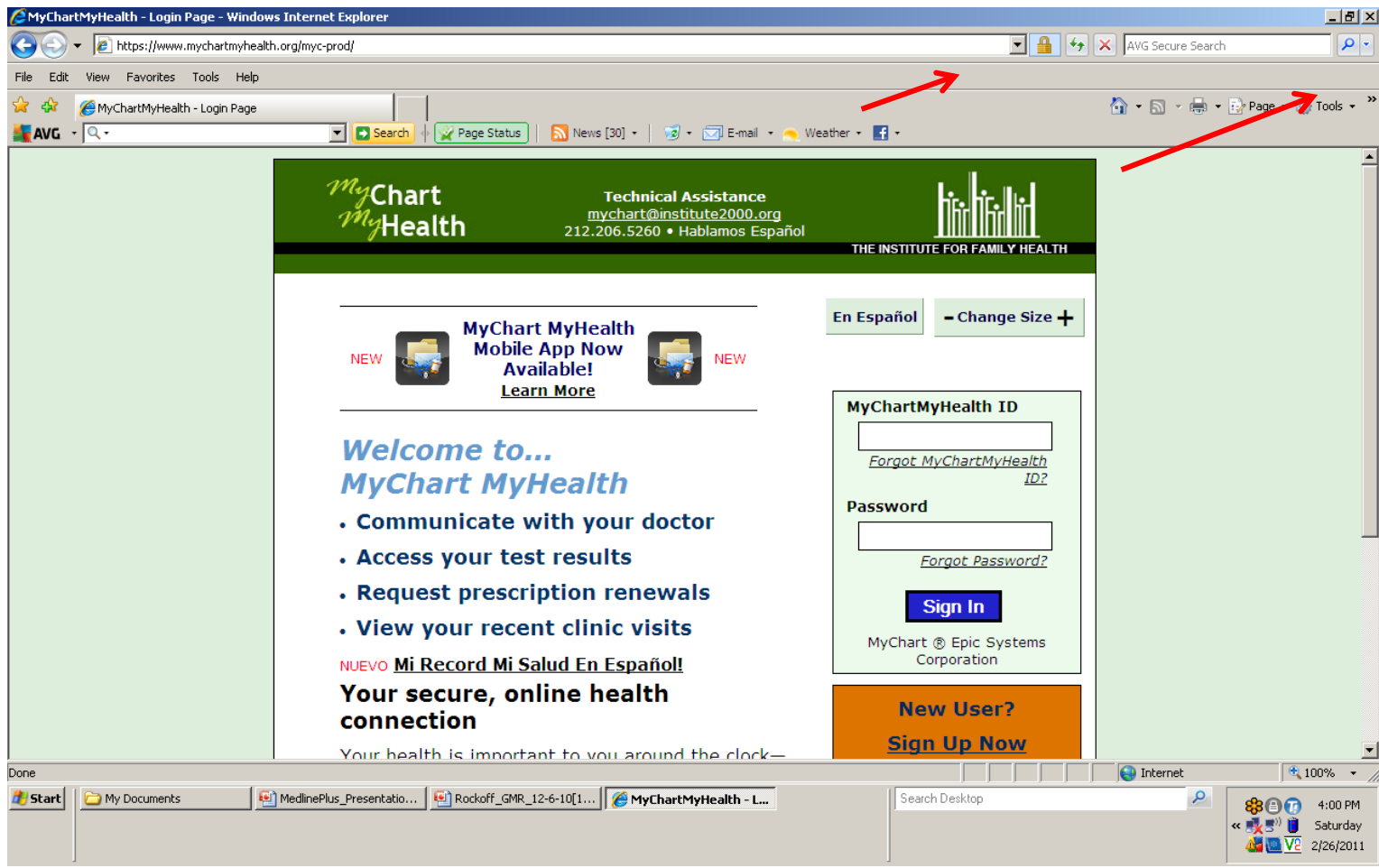
AM [8:00](#) [8:15](#) [8:30](#) [8:45](#) [9:00](#) [9:15](#) [9:30](#) [9:45](#) [10:00](#) [10:15](#)
 AM [10:30](#) [10:45](#) [11:00](#) [11:15](#) [11:30](#)

Mon 12/26/2011 - GESSNER, WILLIAM in KINGSTON-FM - (30 min)

AM [8:00](#) [8:15](#) [8:30](#) [8:45](#) [9:00](#) [9:15](#) [9:30](#) [9:45](#) [10:00](#) [10:15](#)
 AM [11:15](#) [11:30](#) [11:45](#)
 PM [12:00](#) [12:15](#) [12:30](#)

Patient Portal Classes






- Change Size + Home Log Out

Welcome,
Michelle
Zztest!




Schedule an Appointment

[Step 1 of 5] Choose A Reason for Appointment 

Please choose a reason for visit and click **Continue**.

New Health Problem

Continue > Cancel

If you do not see an appropriate reason for your appointment, or if you need help scheduling an appointment, you may [click here](#) to send a request, or call your health center directly. Requests will be responded to within 2 business days. 

New Health Problem	For new onset of symptoms.	15 minutes
Follow-Up Visit	For ongoing medical condition for which you have previously been seen by your provider.	15 minutes
GYN/PAP	To request gynecological or annual woman's health assessments. Not intended for obstetrics.	15 minutes
Preventive Care	For ongoing health maintenance such as immunizations. Not intended for annual physical.	15 minutes

- ▶ My Medical Record
- ▶ Message Center
- ▼ Appointments
 - Schedule an appointment
 - Cancel an appointment
 - Future appointments
 - Past appointments
- ▶ My Referrals
- ▶ Billing & Insurance
- ▶ Address & Settings
- ▶ Customer Service
- Medline Plus
Find information on:

“Care Everywhere”

- National and International
- Shared records for those with the same electronic records
- Helpful for patients traveling or relocating, patients who are transient
- Mental health information included



Questions ???

Vlittle@institute.org

